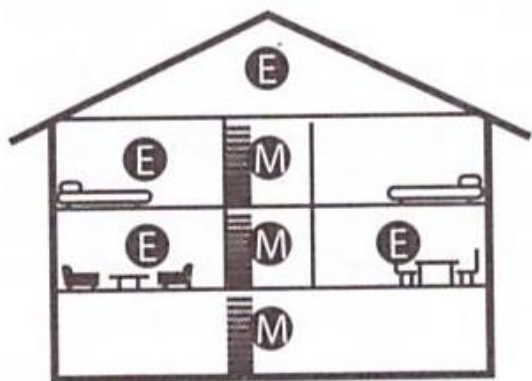


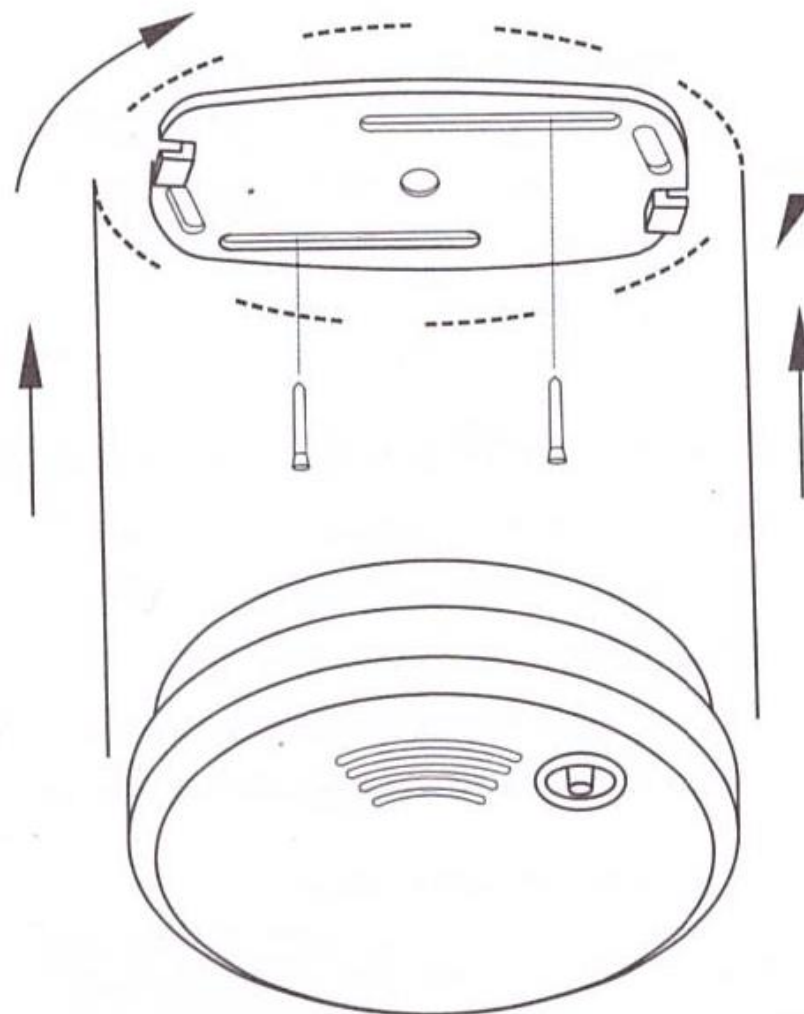
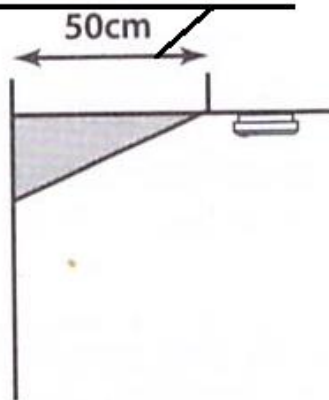
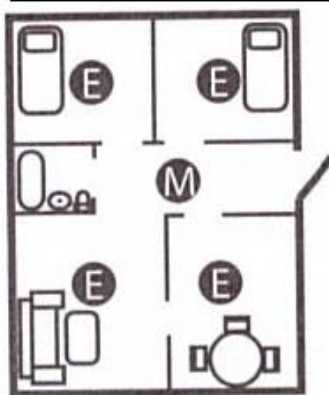
SUITSUANDURI BE1480 PAIGALDAMINE



M = MINIMAALNE PAIGALDUS

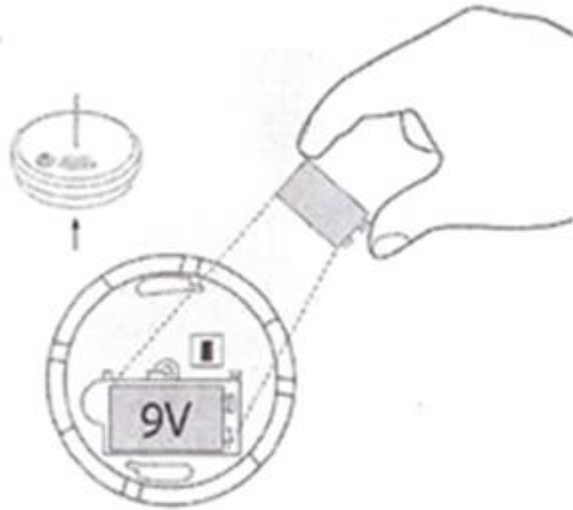
E = SOOVITATAV PAIGALDUS

MINIMAALNE KAUGUS SEINAST!



- Suitsuandur minimaalsel paigaldamisel paigalda andur esiku lakke, kuid mitte kööki ega vannitappa.
- Anduri antenn tõmba vertikaalselt sirgeks
- Soovitame paigaldada suitsuandur elu- ja igasse magamistuppa
- Suitsuandurit kontrolli mitte harvem kui kord kuus, vajutades testnupule /vaata pöördel/

SUITSUANDUR - SINU ELUPÄÄSTJA, HOOLITSE JA HOIA TEDA!



1 Aseta patarei suitsuandurisse



2 Kontrolli suitsuandurit